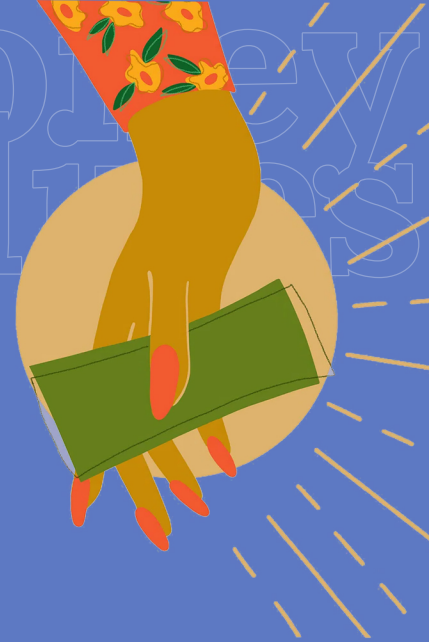


\$3,450

that's how much a visit to the emergency dept costs.⁶

0.79%

of overdoses at an overdose prevention center required EMS, according to one study.⁷

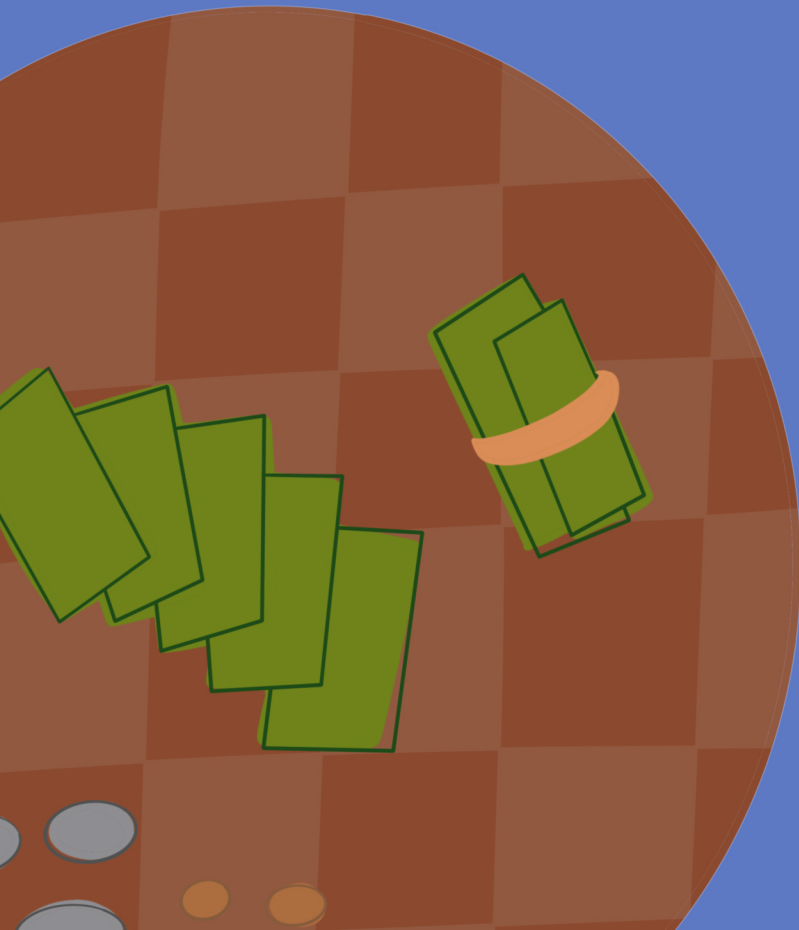


scan for references



saving lives.
saving money.
backed by research.

find out more at
opcinfo.org



people
place &
health
collective



School of
Public Health
BROWN UNIVERSITY



opc
info