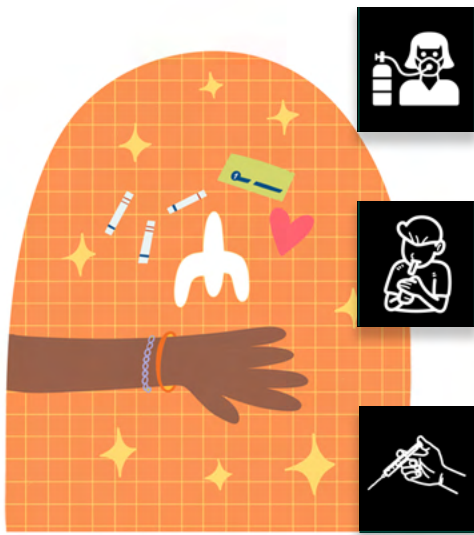




SERVICES OFFERED

Overdose prevention centers (OPCs) are safe, monitored spaces where people can use their own drugs. In addition to providing overdose prevention services, OPCs can offer clients a variety of additional health and wellness services. Ultimately, what services OPCs offer should be based on the needs of the specific community they're located in. To ensure that OPCs are accessible and are meeting the needs of the community, it's important that people who use drugs are involved in the planning and implementation of these sites.

Overdose Prevention and Drug Consumption Services



While specific overdose management plans may vary between OPCs, generally, OPCs care for clients who have experienced an overdose by using oxygen and naloxone.^{1,2}

Research has shown that it's especially important that OPCs allow and accommodate for different methods of use such as inhalation.³ This often looks like having a separate, ventilated room in the OPC or an outside space where clients can go to smoke.⁴ Importantly, when inhalation isn't allowed, OPC services can become inaccessible and inequitable.^{5,6}


Research has also found that allowing and accommodating for assisted injection – when one person assists another who needs help injecting – makes sites more accessible, especially for women and people with disabilities.^{7,8}


Other Health and Wellness Services

Because of their accessibility and non-judgemental approach to care, OPCs can be an ideal place for clients to get connected to other support services.⁹ Some OPCs may be able to provide these services on-site while others may connect clients to organizations providing these resources in the community.

During the first two months of operation at OnPoint NYC, the nation's first publicly recognized OPCs, more than half of individuals who used the OPC received additional support during their visit such as naloxone, counseling, and medical care.¹⁰

Other OPCs have offered:

 **Harm reduction education and equipment** ^{4,11,12}

 **Healthcare**
 - Substance use treatment ^{4,13,14}
 - Mental health care ¹³
 - HIV testing and treatment ⁴
 - Primary care ¹³

 **Food, showers, and laundry** ^{4,12}

 **Social connection including emotional support from staff** ^{4,13,15}

And a range of other services such as holistic care,¹⁰ drug checking programs,^{16,17} and shelter.⁴



References can be found by scanning the QR code or by visiting opcinfo.org/factsheetref